



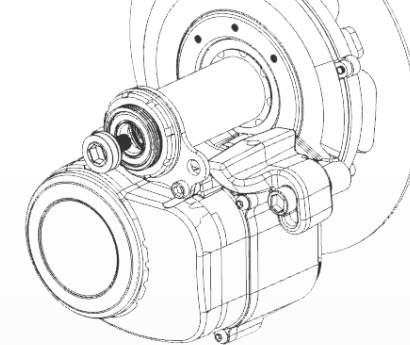
中置电机

MID MOTOR

TSDZ2B

TSDZ2升级介绍

Upgrading Introduction



TSDZ2 与 TSDZ2B 对比

Comparison Between TSDZ2 and TSDZ2B

CONTENT



TSDZ2



TSDZ2B

1

外观升级

Appearance Upgrade

2

主体加强

Contacting Reinforcement

3

离合器升级

Clutch Upgrade

4

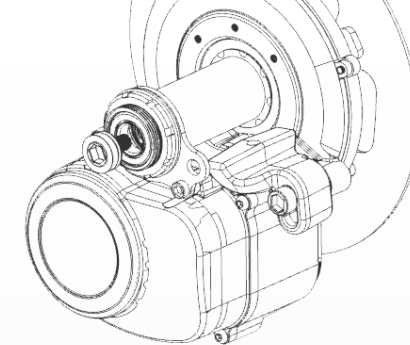
减速轴升级

Reduction shaft Upgrade

5

固定加强片升级

Fixing Plate Upgrade



1. 外观

Appearance

2. 主体

Contacting

3. 离合器

Clutch

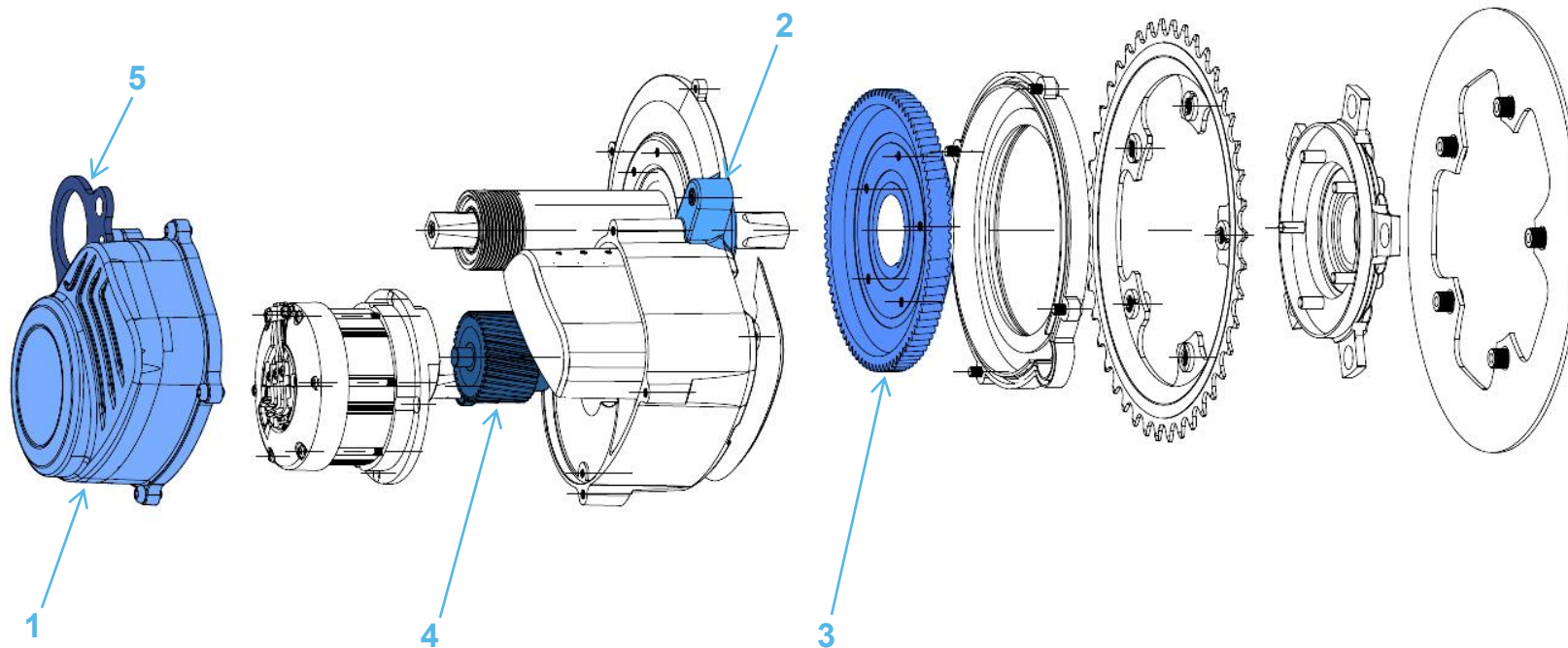
4. 减速轴

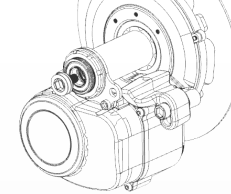
Reduction shaft

5. 固定加强片

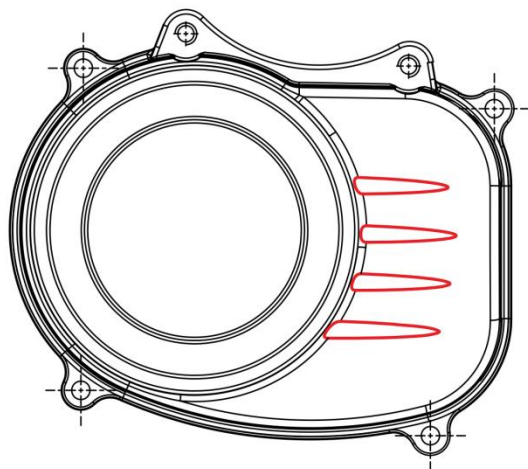
Fixing Plate

TSDZ2B

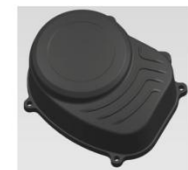
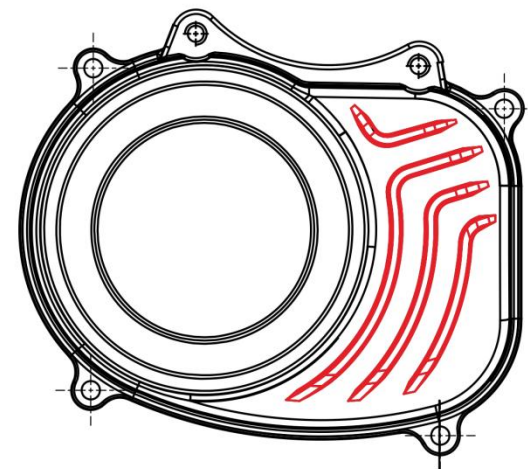




新的线条设计
New Line Design

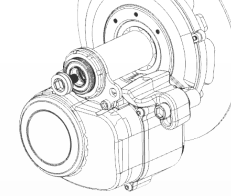


▲ TSDZ2



New

▲ TSDZ2B



外观升级 Appearance Upgrade

1

外观新线条 新线感
New Line New Feeling

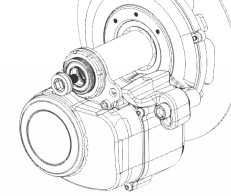


▲ TSDZ2



New

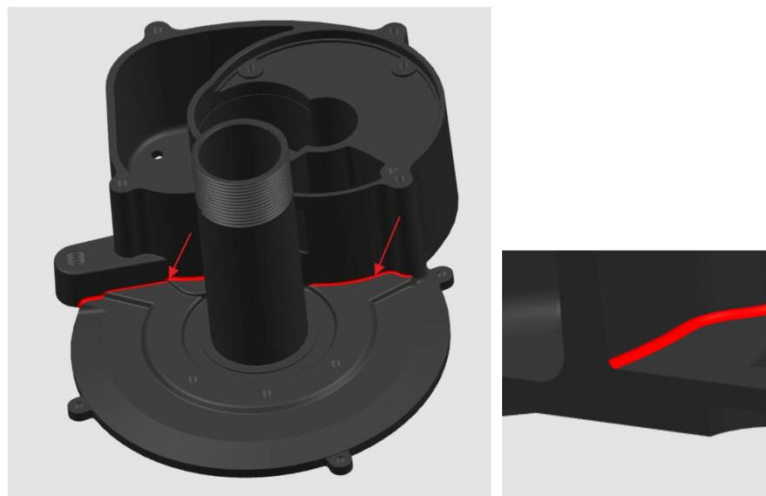
▲ TSDZ2B



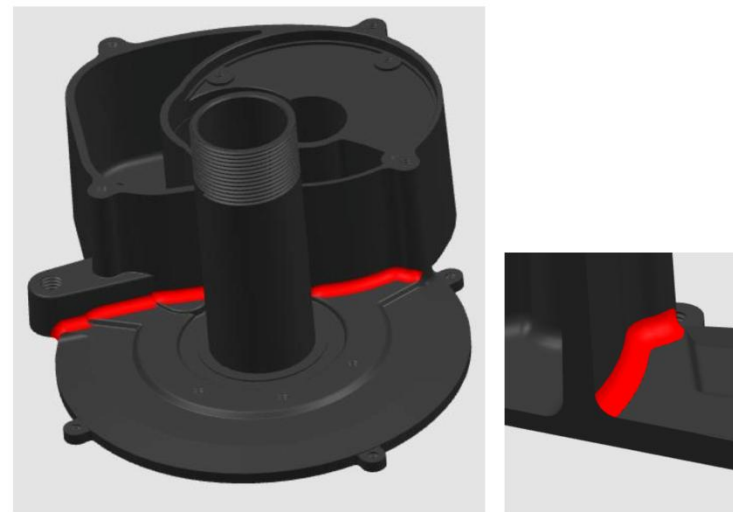
主体加强 Contacting Reinforcement

2

加大圆角 增加强度
Increase fillet and Reinforcing

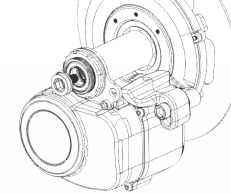


▲ TSDZ2



New

▲ TSDZ2B



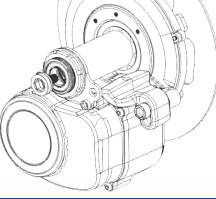
主体加强 Contacting Reinforcement

2

加强后，强度提升15%，降低因此原因的故障率，减少售后问题。

After reinforcing, the strength increases by 15%, reducing the failure rate of this reason and after-sales on this point.



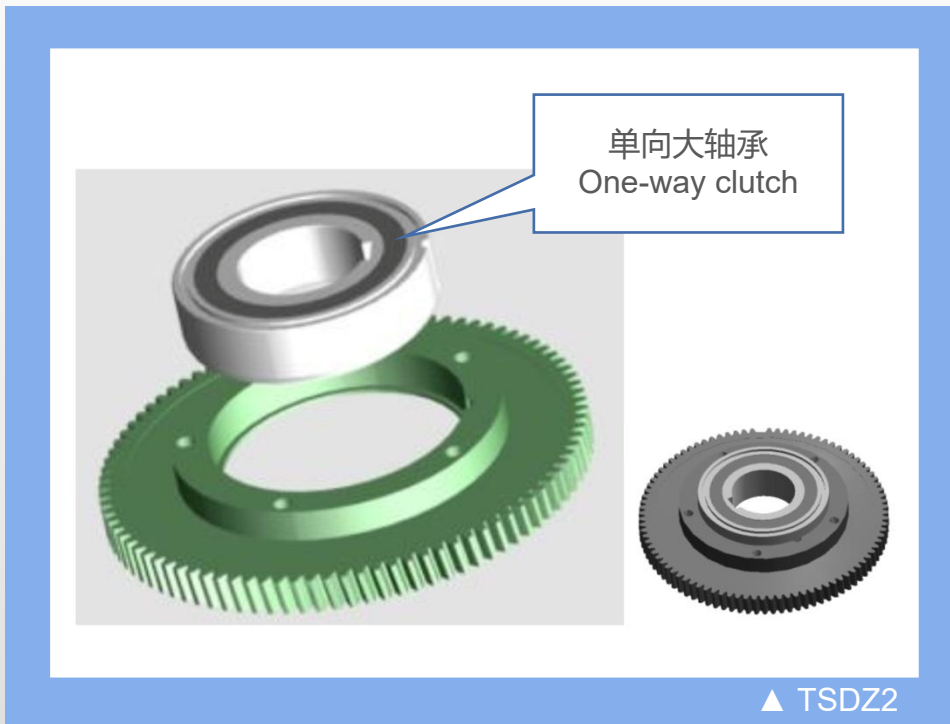


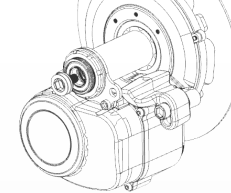
离合器升级 Clutch Upgrade

3

双离合取代单离合，在无电助力时，阻力小，骑行感受更轻。

Your e-bike can be ridden as a normal bike when the motor out of power thanks to the new bidirectional free-wheeling clutch instead of the one-way clutch to reduce the drag resistance from motor.



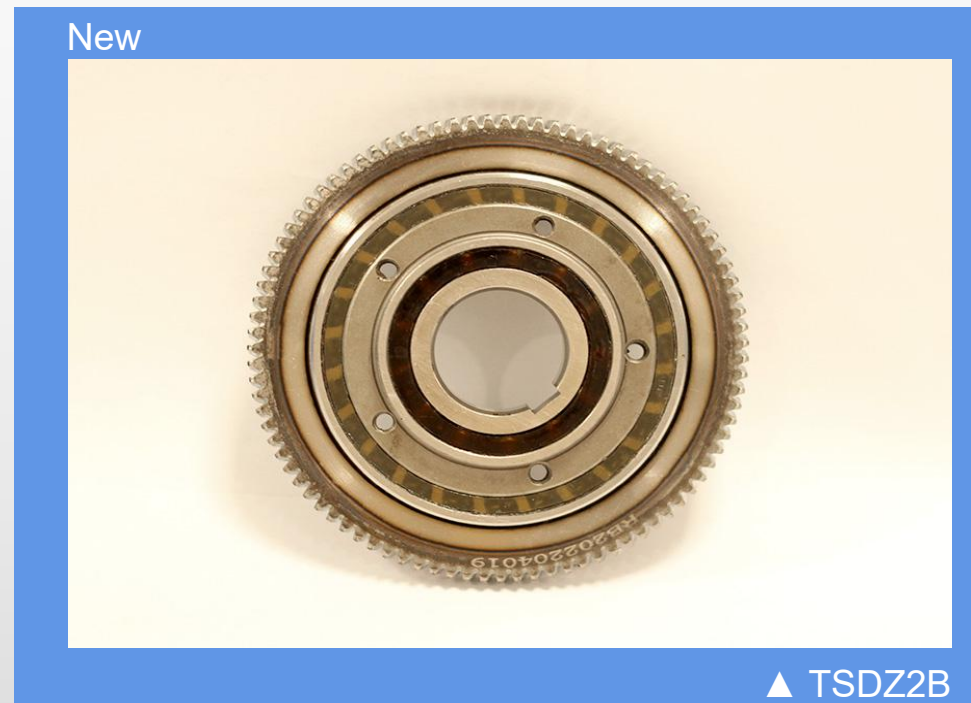
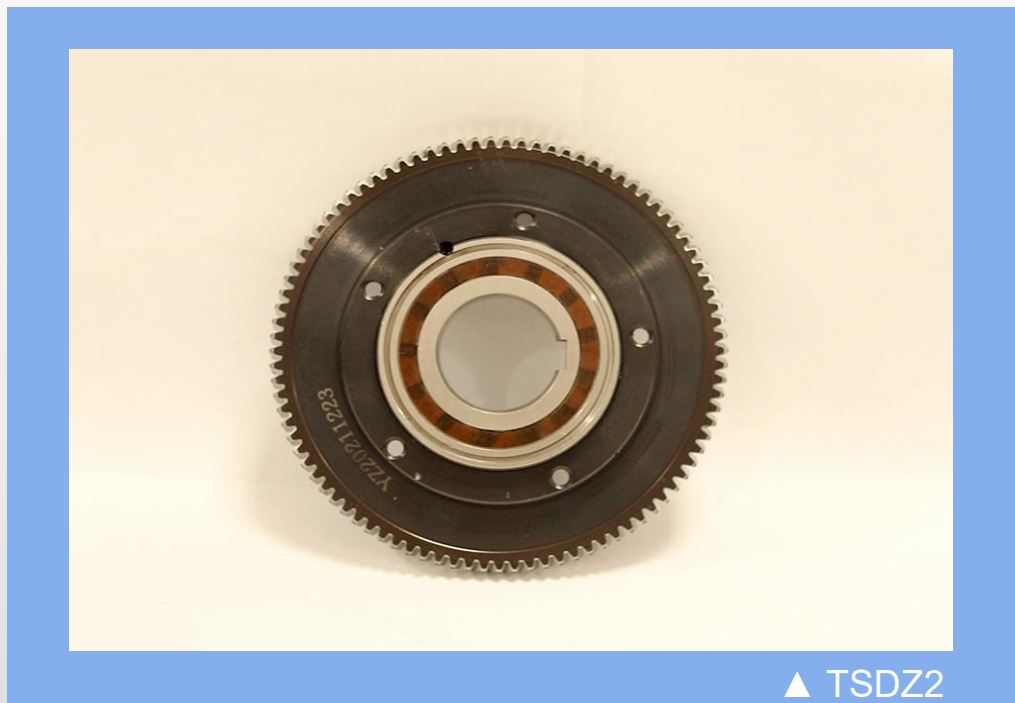


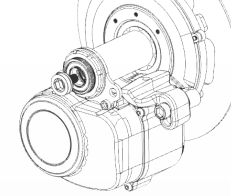
离合器升级 Clutch Upgrade

3

双离合取代单离合，在无电助力时，阻力小，骑行感受更轻。

Your e-bike can be ridden as a normal bike when the motor out of power thanks to the new bidirectional free-wheeling clutch instead of the one-way clutch to reduce the drag resistance from motor.



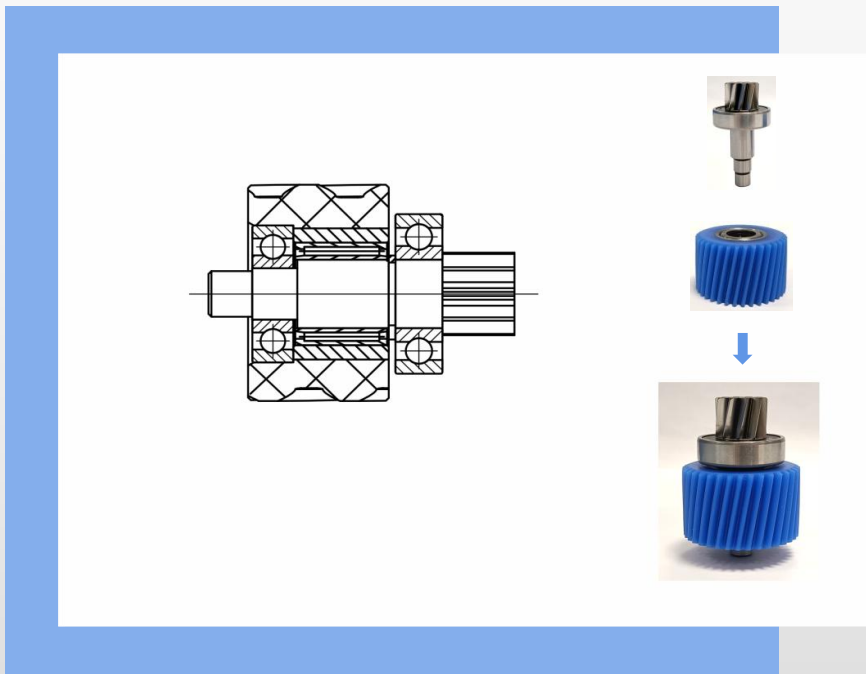


减速轴升级 Reduction Shaft Upgrade

4

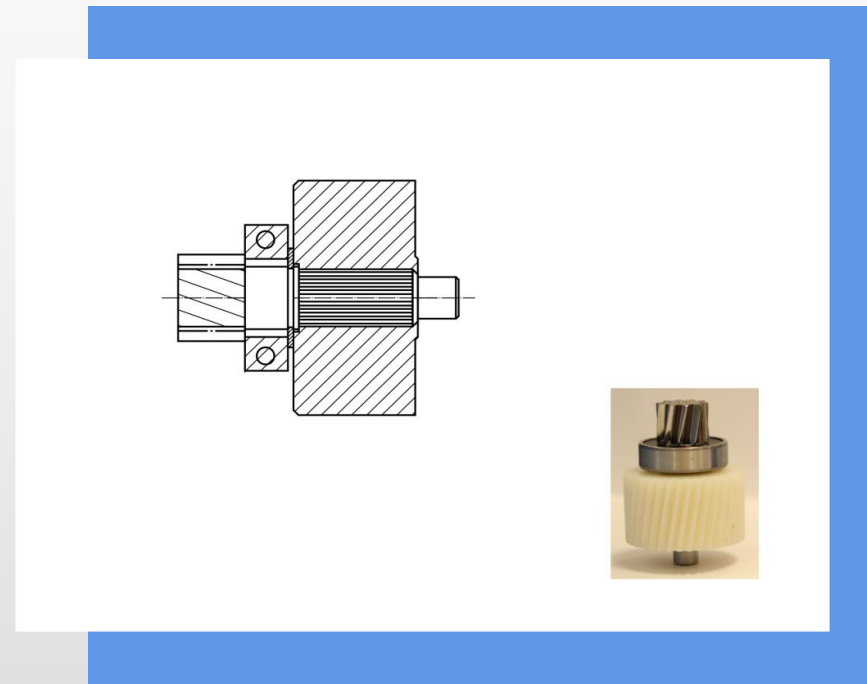
改版前: 可拆卸分离成单独的尼龙齿轮、减速轴、单向滚针轴承。

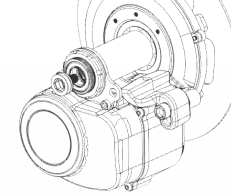
Before: The reduction shaft kit can be disassembled into nylon gear, shaft and one way needle bearing.



改版后: 尼龙齿轮与减速轴为一整体，不可拆卸分离，取消单向滚针轴承。

Now: The reduction gear kit is all in one which is not able to divide. Then there's no one way needle bearing anymore.





减速轴升级 Reduction Shaft Upgrade

4

取消1216单向轴承，新版改为一体尼龙轮，用外离合承载扭矩更大。

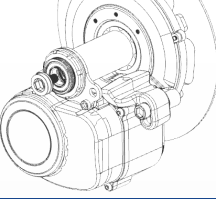
After canceling the one-way bearing, the new design is all in one nylon gear which can bear greater torque with external clutch.



▲ TSDZ2



▲ TSDZ2B

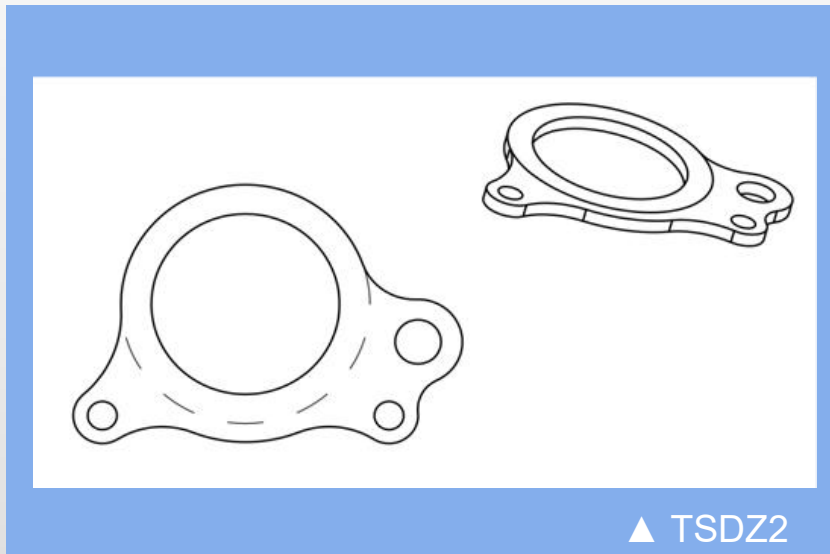


固定加强板升级 Fixing Plate Upgrade

5

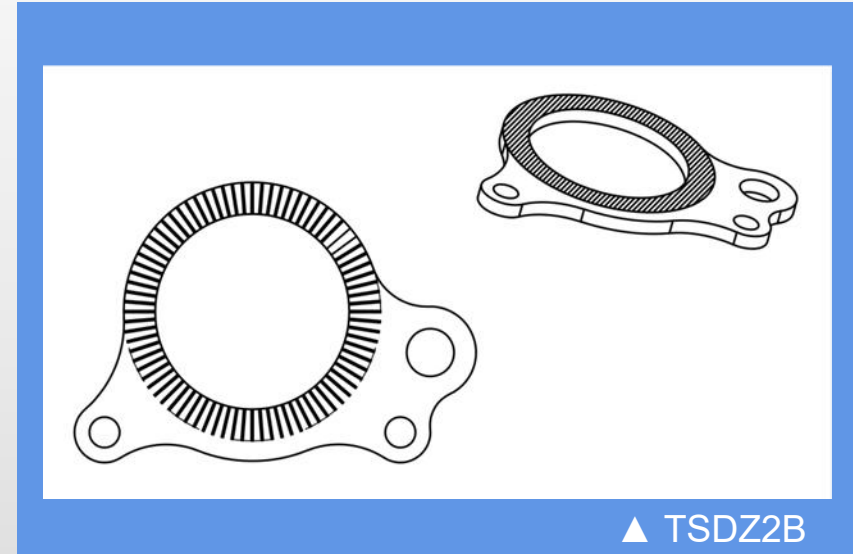
升级前：表面无压花处理，摩擦力有限，电机安装或使用不当易翻转。

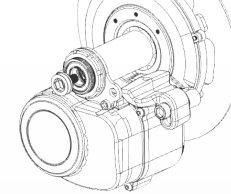
Before: There's no embossing so friction is limited. The motor might be overturned if it was not mounted or used suitably.



升级后：加强板表面压花处理，摩擦力增加，防止电机翻转。

Now: Embossing is added on the surface of the plate so as to increase the friction. Then the motor won't be overturned.





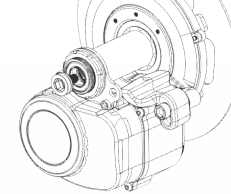
固定加强板升级 Fixing Plate Upgrade

5

固定加强板优化，在无固定块的情况下可单独固定电机，让电机固定更牢固，避免因固定块意外松开，而导致机身翻转，撞击车架产生开裂的问题，增加了机身固定的双重保险。

The fixed reinforcing plate is optimized by adding embossing, depending on which the motor was better fixed even without fixing block. Then the motor is fixed with double protection and avoid the cracking problem of overturning and hitting to the frame when the fixing block was accidentally loosen.





固定加强板升级 Fixing Plate Upgrade

5

机芯固定加强板优化后，提升了电机的适配性，使无法安装固定块车型也能顺利安装电机。

After the upgrade of fixing plate, the adaptability of the motor is improved, so that the motor can also be installed on e-bikes where fixed block is not available.

